



NOW WHAT?

GLOBAL
NETWORK
FOR
ADVANCED
MANAGEMENT



Fifth Anniversary Symposium

**Business and Management Education in
the Age of Contested Globalization**

April 19–21, 2017 • Yale School of Management

NETWORKED

LEARNING IS HERE.

NETWORKED

INQUIRY IS HERE.

NETWORKED

EDUCATION IS HERE.

Global Network for Advanced Management Fifth Anniversary Symposium

**Business and Management Education in
the Age of Contested Globalization**

For decades, most business schools and indeed most businesses have operated under the assumption that flows of goods, money, information, and people across borders will continue to grow as the world becomes more global. Rising nationalism and populism around the globe call for a reality check. What is the future of globalization and what are the implications for globally operating enterprises? How can business schools prepare students for the challenges ahead?

The Global Network for Advanced Management was built for this challenge. The Global Network has already launched a series of innovations—from virtual courses to multi-school case studies—that leverage and connect top minds in markets around the world. To mark the Global Network’s Fifth Anniversary, faculty, students, alumni, deans, and directors of the 29 member schools who have made networked learning, inquiry, and teamwork a reality will convene:

- to celebrate in demonstrations of these innovations, and
- to confront pressing issues on the future of globalization and their implications for management education.

The program begins on Wednesday, April 19, 2017, and concludes on Friday, April 21, 2017. Venue: Yale School of Management, Edward P. Evans Hall, 165 Whitney Avenue, New Haven, Connecticut, United States.

**WEDNESDAY
APRIL 19, 2017**

4:30–5:00 PM

ARRIVAL AND REGISTRATION FOR GLOBAL NETWORK SCHOOL DELEGATIONS

5:00–5:30 PM

**WELCOME AND INTRODUCTORY REMARKS ON
THE “ANTI-GLOBALIZATION NARRATIVE”**

Edward A. Snyder, Indra K. Nooyi Dean & William S. Beinecke Professor of Economics and Management, Yale School of Management

5:30–6:15 PM

THE FUTURE OF GLOBALIZATION: STUDENT HACKATHON

David Bach, Senior Associate Dean for the Executive MBA and Global Programs & Professor in the Practice of Management, Yale School of Management, and student teams convened across Global Network campuses

During this live demonstration of a spring 2017 Global Network Course, participating students from network schools will kick off a hackathon on the future of globalization. Teams will analyze shifting attitudes toward globalization, including trade, immigration, inequality, and human development.

6:15–8:00 PM

WELCOME RECEPTION

THURSDAY
APRIL 20, 2017

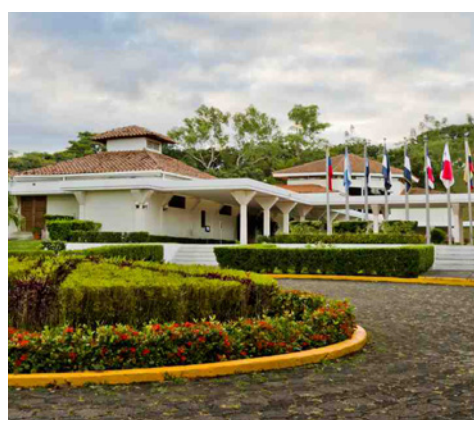
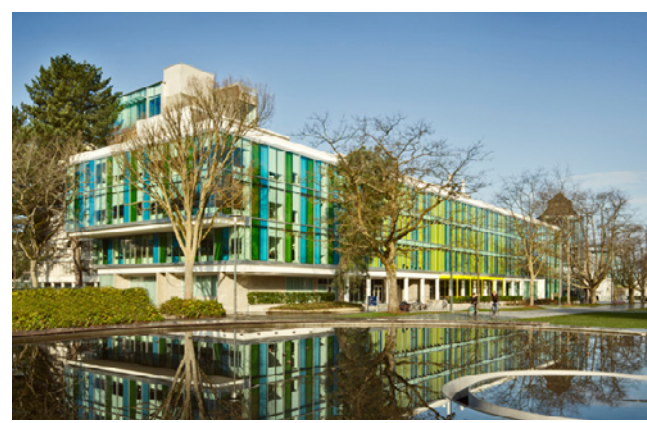
7:45–8:00 AM	<u>ARRIVAL AND REGISTRATION FOR GLOBAL NETWORK SCHOOL DELEGATIONS</u>
8:00–8:30 AM	<u>CONTINENTAL BREAKFAST</u>
8:30–9:15 AM	<u>GLOBAL NETWORK SURVEY PRESENTS: WOMEN IN LEADERSHIP</u> In this plenary session, a panel of network faculty and students will discuss the challenges facing women in leadership roles, as revealed by the 2016 Global Network survey of more than 5,000 MBA students and alumni.
9:15–9:45 AM	<u>TEA/COFFEE BREAK</u>
9:45–11:00 AM	<u>FIVE TRANSFORMATIONS DURING BUSINESS SCHOOL: GLOBAL NETWORK DEANS REFLECT AND DISCUSS THE METAMORPHOSIS STUDENTS EXPERIENCE IN GRADUATE MANAGEMENT EDUCATION</u> Moderated by Richard K. Lyons, Dean and Bank of America Dean’s Chair, Professor, Haas School of Business, University of California Berkeley What five transformations should students experience while in business school? This session will: <ul style="list-style-type: none">• analyze the answers provided by member school deans and directors, and• inquire whether and how management education should respond to the Anti-Globalization Narrative.
11:00–11:15 AM	<u>WALK TO THE NEW HAVEN LAWN CLUB</u> 193 Whitney Avenue, New Haven
11:15 AM–1:00 PM	<u>WORKING LUNCH: THE FUTURE OF GLOBALIZATION — DELEGATION BREAKOUTS</u> During lunch at the New Haven Lawn Club, Global Network delegations will gather at facilitated breakout roundtables to review student-gathered data and discuss regional implications.
1:00–1:15 PM	<u>WALK BACK TO EDWARD P. EVANS HALL</u>
1:15–2:00 PM	<u>GLOBAL NETWORK CURRICULUM UNVEILING: INTRODUCING THE IBM CORPORATE SERVICE CORPS RAW CASE</u> IBM executives and faculty of the University of Ghana Business School, EGADE Business School, Tecnológico de Monterrey, and Yale School of Management Faculty and IBM executives will unveil and discuss the latest Global Network raw business case.
2:00–2:30 PM	<u>TEA/COFFEE BREAK</u>
2:30–4:00 PM	<u>THE FUTURE OF GLOBALIZATION: PLENARY</u> Student teams will report virtually from select Global Network campuses and a panel of Global Network deans, faculty, and experts will lead Symposium attendees in taking stock of globalization.
4:00–4:30 PM	<u>TEA/COFFEE BREAK</u>
4:30–5:30 PM	<u>SYMPOSIUM KEYNOTE SPEAKER</u> Will technology platforms and networks be disrupted by the Anti-Globalization Narrative?
5:30–8:00 PM	<u>GLOBAL NETWORK FIFTH ANNIVERSARY CELEBRATION RECEPTION: NETWORKED EDUCATION IS HERE!</u> Join students, faculty, staff, alumni, and distinguished guests for refreshments and lively conversation in a celebration of five years of groundbreaking, networked management education.

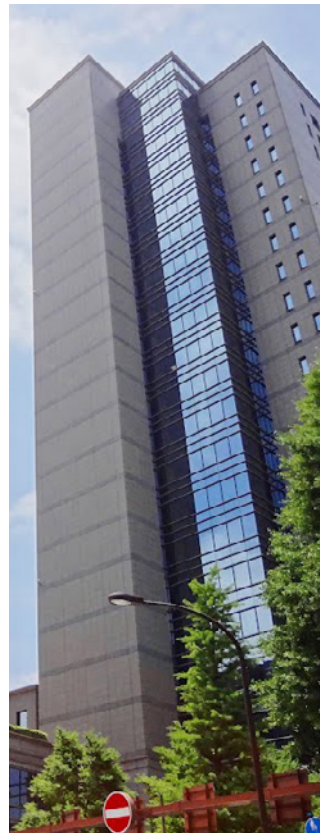
**FRIDAY
APRIL 21, 2017**

	<u>EXECUTIVE EDUCATION (OPTIONAL)</u>
8:00–9:00 AM	<u>CONTINENTAL BREAKFAST</u>
9:00–10:15 AM	<u>LIFELONG LEARNING EXECUTIVE EDUCATION PARALLEL SESSIONS</u>
10:15–10:45 AM	<u>TEA/COFFEE BREAK</u>
10:45 AM–12:00 PM	<u>LIFELONG LEARNING EXECUTIVE EDUCATION PARALLEL SESSIONS</u>
12:00–1:30 PM	<u>LUNCH</u>
1:30 PM	<u>PROGRAM CONCLUSION</u>

The Global Network for Advanced Management drives innovation and creates value by connecting leading global business schools, their resources, and their stakeholders. Launched in 2012, the Global Network for Advanced Management includes 29 leading business schools from diverse regions, countries, cultures, and economies in different phases of development. A common motivation of member schools is to connect and position their students, faculty, staff, alumni and other constituencies so that they can deepen their understanding of differences and commonalities in their economies and increase their effectiveness. Member schools recognize that leaders in all sectors will be asked to contribute to the solutions of major problems that are typically complex and global.

Representing a shift beyond traditional partnership models of business school collaboration, the Global Network enables the development of innovative initiatives that leverage the schools' comparative advantages. Leveraging network efficiencies, utilizing new technologies, building strong institutional and personal relationships, and operating with a minimum of bureaucracy, the Global Network is having a transformational effect on students, member schools, management education, and beyond.





Global Network for
Advanced Management
Fifth Anniversary
Symposium
**BUSINESS AND
MANAGEMENT
EDUCATION IN THE
AGE OF CONTESTED
GLOBALIZATION**

April 19–21, 2017

Yale School of
Management
Edward P. Evans Hall
165 Whitney Avenue
New Haven, Connecticut
United States

**Asian Institute of Management
The Philippines**

EGADE Business School, Tecnológico
de Monterrey **Mexico**

ESMT Berlin **Germany**

FGV Escola de Administração de
Empresas de São Paulo **Brazil**

Fudan University School of
Management **China**

Haas School of Business,
University of California Berkeley **USA**

HEC Paris **France**

Hitotsubashi University, Graduate
School of International Corporate
Strategy **Japan**

Hong Kong University
of Science and Technology
Business School **China**

IE Business School **Spain**

IMD Singapore, **Switzerland**

INCAE Business School
Costa Rica, **Nicaragua**

Indian Institute of Management
Bangalore **India**

INSEAD France, Singapore, UAE

Koç University Graduate School of
Business **Turkey**

Lagos Business School,
Pan-Atlantic University **Nigeria**

London School of Economics
and Political Science, Department of
Management **United Kingdom**

National University of Singapore
Business School **Singapore**

Pontificia Universidad
Católica de Chile School of Business
Chile

Renmin University of China School of
Business **China**

Saïd Business School, University of
Oxford **United Kingdom**

UBC Sauder School of Business
Canada

Seoul National University Business
School **South Korea**

Technion-Israel Institute of
Technology **Israel**

UCD Michael Smurfit Graduate
Business School **Ireland**

University of Cape Town Graduate
School of Business **South Africa**

University of Ghana Business School
Ghana

Universitas Indonesia Faculty
of Economics **Indonesia**

Yale School of Management
USA